



Crochet Sampler Afghan

Designed by Marianne Forrester.

Afghan measures 40" x 50".

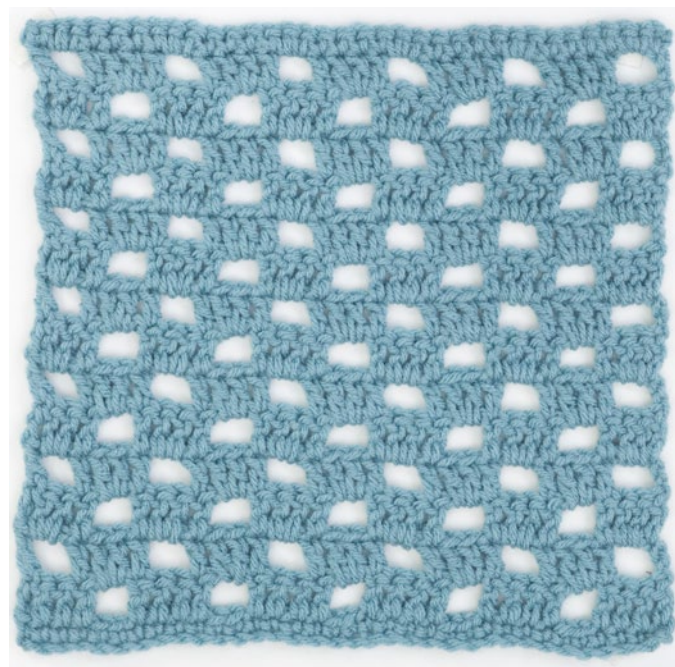
RED HEART® "Super Saver®": [7 oz (198 g), 364 (333 m)] 1 skein each of #657 Dusty Teal **A**, #661 Frosty Green **B**, #631 Lt. Sage **C**, #633 Dark Sage **E**, and 2 skeins of #406 Med Thyme **D**.

Crochet Hook: 5.5mm [US I-9].
Yarn needle.

GAUGE: 13 sts = 4"; 7 rows dc = 4". **CHECK YOUR GAUGE.** Use any size hook to obtain the gauge given.

NOTE: Some of the squares have an obvious "right" and "wrong" side. In these square patterns, the RS and WS are noted in the pattern. In the patterns where they are not noted, both sides are the same and you can make either side the RS.

AFGHAN



Square 1 - Checkerboard

With **A**, Ch 35.

Row 1: Sc in second ch from hook and in each ch across, turn – 34 sc.

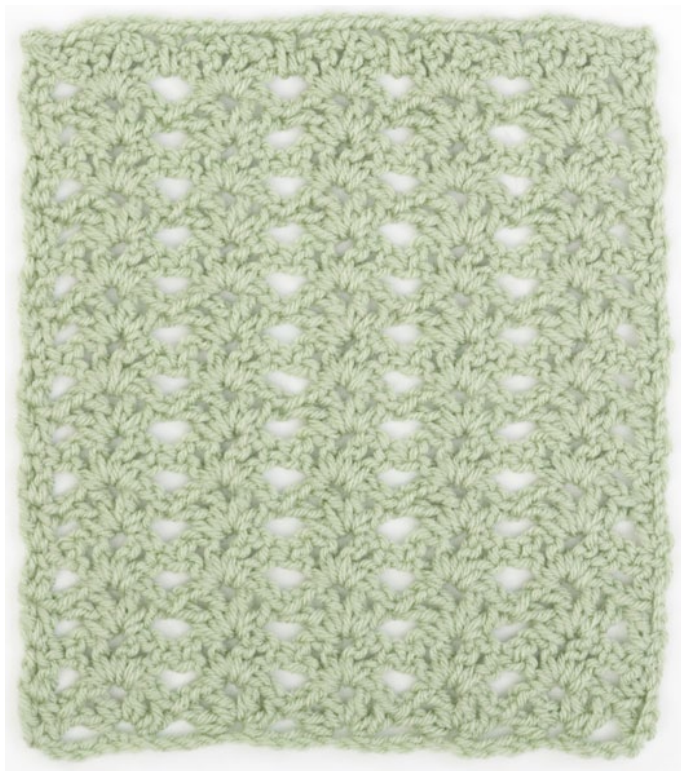
Row 2: Ch 3 (counts as a dc), skip first sc, dc in next 3 sc, * ch 2, skip next 2 sc, dc in next 4 sc; rep from * across, turn – 5 ch-2 sps.

Row 3: Ch 5 (counts as dc, ch 2), skip first dc, * skip next 2 dc, dc in next dc, 2 dc in next ch-2 sp, dc in next dc, ch 2; rep from * across, ending with skip last 2 dc, dc in third ch of turn ch-3, turn – 6 ch-2 sps.

Row 4: Ch 3, * 2 dc in ch-2 sp, dc in next dc, ch 2, skip next 2 dc, dc in next dc; rep from * across, ending with 2 dc in last ch-2 sp, dc in third ch of turn ch-5, turn.

Rows 5-14: Rep Rows 3 and 4 five times.

Row 15: Ch 1, sc in each dc and 2 sc in each ch-2 sp across, ending with sc in third ch of turn ch-5. Fasten off.



Square 2 - Shell

With **B**, ch 34.

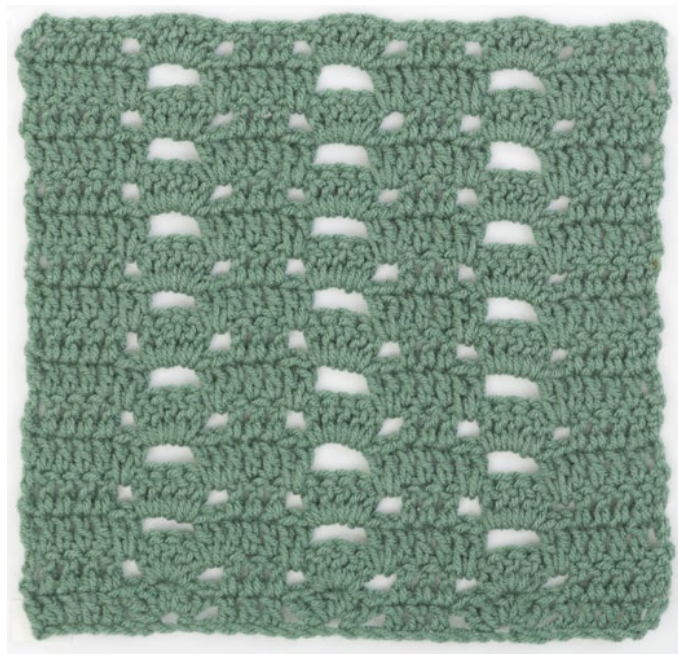
Shell: (Dc, ch 1, dc, ch 1, dc, ch 1, dc) in same st.

Row 1: Dc in fourth ch from hook, * skip next 4 ch, shell in next ch; rep from * 4 times more, ending with skip next 4 ch, 2 dc in last ch, turn – 5 shells.

Row 2: Ch 3 (counts as first dc), dc in first dc, * shell in center ch-1 sp of next shell; rep from * 4 times more, ending with 2 dc in third ch of turn ch-3, turn.

Rows 3-14: Rep Row 2, turn.

Row 15: Ch 1, sc in first 2 dc, *ch 2, sc in center ch-1 sp of next shell, ch 2, dc in space between 2 shells; rep from * 4 times more, ending with ch 2, sc in top of turning ch 3. Fasten off.



Square 3 - Network

With **C**, ch 33.

Row 1 (WS): Dc in fourth ch from hook, dc in next 3 ch, * skip next 2 ch, 5 dc in next ch (shell made), skip next 2 ch, dc in next 3 ch; rep from * twice more, ending with dc in last 2 chs, turn – 3 shells.

Row 2 (RS): Ch 3 (counts as a dc), skip first dc, dc in next 4 dc, * skip next 2 dc, 5 dc in next dc, skip next 2 dc, dc in next 3 dc; rep from * twice more, ending with dc in next dc, dc in third ch of turn ch-3, turn.

Row 3: Ch 3, skip first dc, dc in next 4 dc, * 2 dc in sp before 5-dc group, ch 3, skip 5 dc, 2 dc in space between 5-dc group and next 3 dc, dc in next 3 dc; rep from * twice more, ending with dc in last dc, dc in third ch of turn ch-3, turn.

Row 4: Ch 3, skip first dc, dc in next 4 dc, * skip next 2 dc, 5 dc in next ch-3 sp, skip next 2 dc, dc in next 3 dc; rep from * twice more, ending with dc in last dc, dc in third ch of turn ch-3, turn.

Rows 5-18: Rep rows 3 and 4 seven times. Fasten off.



Square 4 - Wavy Rib

FPdc (Front Post double crochet): Yo, insert hook from front to back to front around post of next st of row below, yo and draw up a loop, (yo and draw through 2 loops on hook) twice.

BPdc (Back Post double crochet): Yo, insert hook from back to front to back around post of next st of row below, yo and draw up a loop, (yo and draw through 2 loops on hook) twice.

With **D**, ch 35.

Row 1 (WS): Dc in fourth ch from hook and each ch across, turn – 33 dc.

Row 2 (RS): Ch 3 (counts as a dc), skip first dc, * FPdc around the post of next dc, dc in next dc; rep from * across to last 2 sts, FPdc around the post of next dc, dc in third ch of turn ch-3, turn.

Row 3: Ch 3, skip first dc, * BPdc around next post-dc, dc in next dc; rep from * to last 2 sts, BPdc around the post of next post-dc, dc in third ch of turn ch-3, turn.

Row 4: Ch 3, skip first dc, * FPdc around next post of next post-dc, dc in next dc; rep from * to last 2 sts, FPdc around the post of next post-dc, dc in third ch of turn ch-3, turn.

Rows 5-21: Rep Rows 3 and 4 eight times, then repeat Row 3 once. Fasten off.



Square 5 - Double O Double V

FPdc (Front Post double crochet): Yo, insert hook from front to back to front around post of next st 2 rows below, yo and draw up a loop, (yo and draw through 2 loops on hook) twice.

With **E**, ch 31.

Row 1 (RS): Sc in second ch from hook and each ch across, turn – 30 sc.

Row 2 and all even numbered rows throughout (WS): Ch 1, sc in each st across, turn.

Row 3: Ch 1, sc in first 9 sc, (dc in next 4 sc, sc in next 4 sc) twice, sc in last 5 sc, turn.

Row 5: Ch 1, sc in first 8 sc, *FPdc around each of next 2 dc two rows below, skip next 2 sc on last row, (“behind” the FPdc sts just made), sc in next 2 sc on last row, repeat from *, ending with sc in last 6 sc. Turn. (22 sc and 8 FPdc)

Row 7: Ch 1, sc in first 8 sc, *FPdc around each of next 2 FPdc two rows below, skip next 2 sc on last row, (“behind” the FPdc sts just made), sc in next 2 sc on last row, repeat from *, ending with sc in last 6 sc. Turn.

Row 9: Ch 1, sc in first 7 sc, FPdc around each of the next 2 FPdc two rows below, skip 2 sc on last row behind FPdc, sc in next 4 sc on last row, FPdc around each of the next 4 FPdc two rows below, skip 4 sc on last row behind FPdc, sc in next 4 sc on last row, FPdc around each of the next 2 FPdc two rows below, skip 2 sc on last row behind FPdc, sc in last 7 sc. Turn.

Row 11: Ch 1, sc in first 7 sc, FPdc around each of the next 2 FPdc two rows below, skip 2 sc on last row behind FPdc, sc in next 4 sc on last row, skip next 2 FPdc two rows below, FPdc around third and fourth FPdc two rows below, FPdc around first and then second skipped FPdc two rows below



(Cable made), skip 4 sc on last row behind FPdc, sc in next 4 sc on last row, FPdc around each of the next 2 FPdc two rows below, skip 2 sc on last row behind FPdc, sc in last 7 sc. Turn.

Row 13: Rep row 3.

Row 15: Rep row 3.

Row 17: Rep row 5.

Row 19: Rep row 7.

Row 21: Ch 1, sc in first 9 sc, * FPdc around each of the next 4 FPdc, skip 4 sc behind 4 FPdc, sc in next 4 sc; rep from * once, sc in last 5 sc, turn.

Row 23: Ch 1, sc in first 9 sc, * Cable over next 4 FPdc, skip 4 sc behind cable, sc in next 4 sc; rep from * once, sc in last 5 sc, turn.

Rows 25 and 27: Rep row 21.

Row 29: Rep row 23.

Rows 31 and 33: Rep row 7.

Row 35: Rep row 21.

Row 37: Rep row 2. Fasten off.



Square 6 - Crochet Cable

With **C**, chain 35.

Row 1 (RS): Sc in second ch from hook and in each ch across, turn – 34 sc.

Row 2 (WS): Ch 3 (counts as first dc), skip first sc, * skip next sc, dc in next 3 sc, yo, with hook in front of work, go back and insert hook from front to back in skipped sc before 3 dc group, loosely draw through a loop and bring it up to the height of the 3 dc group, yo and complete dc (Cable St); rep from * 7 times more, ending with dc in last sc, turn – 8 Cable sts made.

Row 3: Ch 1, sc in each dc across, turn – 34 sc.

Rows 4-23: Rep rows 2 and 3 ten times. Fasten off.



Square 7 - Waves and Bobbles

CL5 (5-dc Cluster): (Yo and draw up a loop, yo and draw through 2 loops on hook) 5 times, yo and draw through all 6 loops on hook.

Dc2(3)tog: (Yo and draw up a loop in next st, yo and draw through 2 loops) 2 (3) times, yo and draw through all 3 (4) loops on hook.

FPdc (Front Post double crochet): Yo, insert hook from front to back to front around post of next st of row below, yo and draw up a loop, (yo and draw through 2 loops on hook) twice.

BPdc (Back Post double crochet): Yo, insert hook from back to front to back around post of next st of row below, yo and draw up a loop, (yo and draw through 2 loops on hook) twice.

With **B**, ch 34.

Row 1 (WS): Dc in fourth ch from hook, * (ch 1, skip next ch, dc in next ch) 3 times, dc in next 2 chs, CL5 in next ch, dc in next 3 chs, ch 1, skip next ch, dc in next ch; rep from *, ending with ch 1, skip next ch, dc in last ch, turn.

Row 2 (RS): Ch 2 (counts as a dc), dc in next ch-1 sp, * ch 1, FPdc around next dc, ch 1, skip next ch-1 sp, dc2tog in next 2 dc, dc in next 3 sts, dc2tog in next 2 sts, ch 1, skip next ch-1 sp, FPdc around next dc, ch 1, 3 dc in next dc; rep from * once, ending with ch 1, FPdc around next dc, dc in 2nd ch of turn ch-2, turn.

Row 3: Ch 3 (counts as dc and ch 1), skip first 2 sts, * 2 dc in next dc, dc in next dc, 2 dc in next dc, ch 1, skip next ch-1 sp, BPdc around next post-dc, ch 1, skip next ch-1 sp,



dc2tog in next 2 dc, dc in next dc, dc2tog in next 2 dc, ch 1, skip next ch-1 sp, BPdc around next post-dc, ch 1, skip next ch-1 sp; rep from * once, ending with 2 dc in next dc, dc in 2nd ch of turn ch-2, turn.

Row 4: Ch 2, skip first st, dc in next dc, 2 dc in next dc, * ch 1, skip next ch-1 sp, FPdc around next post-dc, ch 1, skip next ch-1 sp, dc3tog in next 3 sts, ch 1, skip next ch-1 sp, FPdc around next post-dc, ch 1, skip next ch-1 sp, 2dc in next dc, dc in next 3 dc, 2 dc in next dc; rep from * once, ending with dc in 2nd ch of turn ch-3, turn.

Row 5: Ch 2, skip first st, * dc in next 3 dc, CL5 in next dc, dc in next 3 dc, ch 1, skip next ch-1 sp, BPdc around next post-dc, ch 1, skip next ch-1 sp, dc in next st, ch 1, skip next ch-1 sp, BPdc around next post-dc, ch 1, skip next ch-1 sp; rep from * once, ending with dc in last 3 dc, dc in 2nd ch of turn ch-2, turn.

Row 6: Ch 2, skip first st, dc in next dc, *dc2tog in next 2 dc, ch 1, skip next ch-1 sp, FPdc around next post-dc, ch 1, skip next ch-1 sp, 3 dc in next dc, ch 1, skip next ch-1 sp, FPdc around next post-dc, ch 1, skip next ch-1 sp, dc2tog in next 2 dc, dc in next 3 sts; rep from * once, ending with dc2tog in next 2 dc, ch 1, skip next ch-1 sp, dc in 2nd ch of turn ch-2, turn.

Row 7: Ch 2, dc in first dc, ch 1, skip next ch-1 sp, dc2tog in next 2 dc, * dc in next dc, dc2tog in next 2 dc, ch 1, skip next ch-1 sp, BPdc around next post-dc, ch 1, skip next ch-1 sp, 2 dc in next dc, dc in next dc, 2 dc in next dc, ch 1, skip next ch-1 sp, BPdc around post of next post-dc, ch 1, skip next ch-1 sp, dc2tog in next 2 dc; rep from * once, ending with dc in 2nd ch of turn ch-2, turn.

Row 8: Ch 2, skip first st, dc in next dc, ch 1, skip next ch-1 sp, * FPdc around next post-dc, ch 1, skip next ch-1 sp, 2 dc in next dc, dc in next 3 dc, 2 dc in next dc, ch 1, FPdc around next post-dc, ch 1, skip next ch-1 sp, dc3tog in next 3 sts, ch 1, skip next ch-1 sp; rep from * once, ending with FPdc around next dc, dc in 2nd ch of turn ch-2, turn.

Row 9: Ch 3, skip first st, BPdc around next post-dc, *ch 1, skip next ch-1 sp, dc in next st, ch 1, skip next ch-1 sp, BPdc around next post-dc, ch 1, skip next ch-1 sp, dc in next 3 dc, CL5 in next dc, dc in next 3 dc, ch 1, skip next ch-1 sp, BPdc around next post-dc; rep from *, ending with ch 1, skip next dc, dc in 2nd ch of turn ch-2, turn.

Rows 10-20: Rep rows 2-9; then rep rows 2-4. Fasten off.



Square 8 - Wagon Wheel

This square is worked completely on the RS without turning.

PS (3-hdc Puff st): (Yo and draw up a loop) 3 times in same sp, yo and draw through all 7 loops on hook.

Ch 5; join with a sl st in first ch to form a ring.

Rnd 1: Ch 5 (counts as tr and ch 1): (Tr, ch 1) 11 times in ring; join with a sl st in fourth ch of beg ch-5 – 12 ch-1 sps.

Rnd 2: Sl st in ch sp, (PS, ch 1) twice in first ch-1 sp and each ch-1 sp around; join with sl st in first puff st – 24 puff sts.

Rnd 3: Sl st in first ch-1 sp, ch 6 (counts as tr and ch 2), tr in same sp (first corner), * ch 1, dc in next ch-1 sp, (ch 1, hdc in next ch-1 sp) 3 times, ch 1, dc in next ch-1 sp, ch 1 **, (tr, ch 2, tr) in next ch-1 sp (corner); rep from * twice more, then rep from * to ** once more; join with sl st in fourth ch of beg ch 6.

Rnd 4: Sl st in next ch-2 sp, (PS, ch 3, PS) in same sp (first corner), * (ch 1, dc in next ch-1 sp) to next corner **, (ch 1, PS, ch 3, PS) in corner ch-2 sp; rep from * twice more, then rep from * to ** once more; join with sl st in first puff st.

Rnd 5: Sl st in next ch-3 sp, (PS, ch 3, PS) in same sp (first corner), * (ch 1, dc in next ch-1 sp) to next corner **, (PS, ch 3, PS) in corner ch-3 sp; rep from * twice more, then rep from * to ** once more; ch 1; join with sl st in first puff st.

Rnds 6-8: Rep rnd 5.

Rnd 9: Sl st in corner ch-3 sp, ch 1, 3 sc in same ch-3 sp, 2 sc in each ch-1 sp and 3 sc in each corner ch-3 sp around; join with sl st in first sc. Fasten off.



Square 9 - Radiant

This square is worked completely on the RS without turning.

CL2 (2-dc Cluster): In same ch sp, (yo and draw up a loop, yo and draw through 2 loops) twice, yo and draw through all 3 loops on hook.

CL3 (3-dc Cluster): In same ch sp, (yo and draw up a loop, yo and draw through 2 loops on hook) 3 times, yo and draw through all 4 loops on hook.

With **A**, ch 5; join with a sl st in first ch to form a ring.

Rnd 1: Ch 3, CL2 in ring, (ch 3, CL3) 7 times in ring, ch 3; join with sl st in third ch of beg ch-3. Fasten off **A**.

Rnd 2: Join **E** with sl st in any ch-3 sp, ch 3 (counts as a dc), (2 dc, ch 3, 3 dc) in same ch-3 sp (first corner), * 3 hdc in next ch-3 sp, (3 dc, ch 3, 3 dc) in next ch-3 sp; rep from * twice more, 3 hdc in last ch-3 sp; join with sl st in third ch of beg ch-3. Fasten off **E**.

Rnd 3: Join **C** with sl st in any corner ch-3 sp, ch 3 (counts as a dc), (2 dc, ch 3, 3 dc) in same ch-3 sp, * 3 dc between 3 dc and 3 hdc groups, 3 dc between 3 hdc and 3 dc groups **, (3 dc, ch 3, 3 dc) in corner ch-3 sp; rep from * twice more; rep from * to ** once more; join with sl st in third ch of beg ch-3. Fasten off **C**.

Rnd 4: Join **A** with sl st in any corner ch-3 sp, ch 3 (counts as first dc), (2 dc, ch 3, 3 dc) in same ch-3 sp, * (3 dc between next two 3 dc groups) three times **, (3 dc, ch 3, 3 dc) in corner ch-3 sp; rep from * twice more; rep from * to ** once more; join with sl st in third ch of beg ch-3. Fasten off **A**.

Rnd 5: Join **E** with sl st in any corner ch-3 sp, ch 3 (counts as first dc), (2 dc, ch 3, 3 dc) in same ch-3 sp, * (3 dc between next two 3 dc groups) four times **, (3 dc, ch 3, 3

dc) in corner ch-3 sp; rep from * twice more; rep from * to ** once more; join with sl st in third ch of beg ch-3. Fasten off **E**.

Rnd 6: Join **D** with sl st in any corner ch-3 sp, ch 3 (counts as first dc), (2 dc, ch 3, 3 dc) in same ch-3 sp, * (3 dc between next two 3 dc groups) five times **, (3 dc, ch 3, 3 dc) in corner ch-3 sp; rep from * twice more; rep from * to ** once more; join with sl st in third ch of beg ch-3. Fasten off **D**.

Rnd 7: Join **A** with sl st in any corner ch-3 sp, ch 3 (counts as first dc), (2 dc, ch 3, 3 dc) in same ch-3 sp, * (3 dc between next two 3 dc groups) six times **, (3 dc, ch 3, 3 dc) in corner ch-3 sp; rep from * twice more; rep from * to ** once more; join with sl st in third ch of beg ch-3. Fasten off **A**.

Rnd 8: Join **E** with sc in any corner ch-3 sp, ch 1, 3 sc in same sp, sc in each dc and 3 sc in each corner ch-3 sp around; join with sl st in first sc. Fasten off **E**.



Square 10 - Twinkle, Twinkle

Carry color not in use loosely on wrong side of work, working over it with matching color when possible. Do not pull too tightly or piece will not lay flat.

When changing from one color to another, work last stitch of old color until 2 loops remain on hook, drop old color, pick up new color, yo and complete st with new color.

With **A**, ch 34.

Row 1 (RS): Change to **D**, dc in fourth ch from hook and in next 5 ch, (with **A**, dc in next 2 ch, with **D**, dc in next 6 ch) three times, with **A**, dc in last ch, turn – 32 dc.

Row 2: With **A**, ch 3 (counts as a dc), skip first st, dc in



next 2 sts, with **D**, dc in next 2 sts, (with **A**, dc in next 6 sts, with **D**, dc in next 2 sts) 3 times, With **A**, dc in next 2 sts, dc in third ch of turn ch-3, turn.

Row 3: With **A**, ch 3, skip first st, with **D**, dc in next 6 sts, (with **A**, dc in next 2 sts, with **D**, dc in next 6 sts) 3 times, with **A**, dc in third ch of turn ch-3, turn.

Row 4: With **D**, ch 3, skip first st, dc in next 2 sts, with **A**, dc in next 2 sts, (with **D**, dc in next 6 sts, with **A**, dc in next 2 sts) 3 times, with **D**, dc in next 2 sts, dc in third ch of turn ch-3, turn.

Row 5: With **D**, ch 3, skip first st, with **A**, dc in next 6 sts, (with **D**, dc in next 2 sts, with **A**, dc in next 6 sts) 3 times, with **D**, dc in third ch of turn ch-3, turn.

Row 6: Rep row 4.

Row 7: Rep row 3.

Rows 8-16: Rep rows 2-7 once; then rep rows 2-4. Fasten off both colors.



Square 11 - Slipstream

Dc3(4,7)tog: (Yo and draw up a loop in next st, yo and draw through 2 loops) 3(4,7 times), yo and draw through all 4(5,8) loops on hook.

With **C**, ch 37.

Row 1 (WS): Sc in second ch from hook, sc in next ch, (skip next 3 chs, 7 dc in next ch [shell made], skip next 3 chs, sc in next 3 chs) 3 times, skip next 3 chs, 4 dc in last ch (half shell made). Change to **B**, fasten off **C**, turn – 3 shells; 1 half shell.

Row 2 (RS): With **B**, ch 1, sc in first 2 dc, (ch 3, dc7tog worked across next 7 sts, ch 3, sc in next 3 dc) 3 times, ch 3, dc4tog worked across last 4 sts, turn.

Row 3: Ch 3 (counts as a dc), 3 dc in first st, (skip next ch-3 sp, sc in next 3 sc, skip next ch-3 sp, 7 dc in next st) 3 times, skip next ch-3 sp, sc in last 2 sc. Change to **C**, fasten off **B**, turn.

Row 4: With **C**, ch 3, skip first st, dc3tog in next 3 sts, (ch 3, sc in next 3 dc, ch 3, dc7tog in next 7 sts) 3 times, ch 3, sc in next dc, sc in third ch of turn ch-3, turn.

Row 5: Ch 1, sc in first 2 sc, (skip next ch-3 sp, 7 dc in next st, skip next ch-3 sp, sc in next 3 sc) 3 times, skip next ch-3 sp, 4 dc in third ch of turn ch-3. Change to **B**, fasten off **C**, turn.

Rows 6-20: Rep rows 2-5 three times, then repeat rows 2-4. Fasten off.



Square 12 - Lace Ripples

With **E**, ch 34.

Row 1 (RS): Sc in second ch from hook and in each ch across, turn – 33 sc.

Row 2 (WS): Ch 1, sc in first sc, * sc in next st, ch 1, skip next st, hdc in next st, ch 1, skip next st, dc in next st, (ch 1, skip next st, tr in next st) twice, ch 1, skip next st, dc in next st, ch 1, skip next st, hdc in next st, ch 1, skip next st, sc in next st *, ch 1, skip next st; rep from * to * once, ending with sc in last sc. Fasten off **E**, turn.

Row 3: Join **B** with sl st in first st, ch 1, sc in each st and ch-1 sp across, turn.

Row 4: Ch 1, sc in each sc across. Fasten off **B**, turn.

Row 5: Join **D** with sl st to first sc, ch 4 (counts as a tr), skip first sc, * tr in next sc, ch 1, skip next sc, dc in next sc, ch 1, skip next sc, hdc in next sc, (ch 1, skip next sc, sc in next sc) twice, ch 1, skip next sc, hdc in next sc, ch 1, skip



CROCHET SAMPLER AFGHAN | CROCHET

next sc, dc in next sc, ch 1, skip next sc, tr in next sc *, ch 1, skip next sc; rep from * to * once, ending with tr in last sc, turn.

Row 6: Ch 4 (counts as first tr), skip first st, * tr in next st, ch 1, skip next st, dc in next st, ch 1, skip next st, hdc in next st, (ch 1, skip next st, sc in next st) twice, ch 1, skip next st, hdc in next st, ch 1, skip next st, dc in next st, ch 1, skip next st, tr in next st *, ch 1, skip next st; rep from * to * once, ending with tr in fourth ch of turn ch-4. Fasten off **D**, turn.

Rows 7-8: Rep rows 3 and 4.

Row 9: Join **E** with sl st in first sc, ch 1, sc in first sc, * sc in next sc, ch 1, skip next sc, hdc in next sc, ch 1, skip next sc, dc in next sc, (ch 1, skip next ch, tr in next ch) twice, ch 1, skip next sc, dc in next sc, ch 1, skip next sc, hdc in next sc, ch 1, skip next sc, sc in next sc *, ch 1, skip next sc; rep from * to * once, ending with sc in last sc, turn.

Rows 10-25: Rep rows 2-9 twice.

Row 26: Ch 1, sc in each st and each ch-1 sp across. Fasten off **E**.

FINISHING

Each completed square will measure approximately 10" x 10". Because of the variety of stitches and patterns, squares may differ slightly in size from each other. Blocking them all to the same size before sewing them together will make assembly easier.

Arrange squares following Construction Diagram, or in 3 x 4 pattern as desired. With right sides together, whipstitch squares together into four rows of 3 squares each. Whipstitch rows together in like manner.

10	2	6
5	4	9
8	11	3
7	1	12

Border

Border is worked in rounds, all on the right side.

Dtr (double triple crochet): Yo 3 times and draw up a loop, (yo and pull through 2 loops on hook) 4 times.

CL2 (2-dc Cluster): In same ch sp, (yo and draw up a

loop, yo and draw through 2 loops) twice, yo and draw through all 3 loops on hook.

CL3 (3-dc Cluster): In same ch sp, (yo and draw up a loop, yo and draw through 2 loops on hook) 3 times, yo and draw through all 4 loops on hook.

Rnd 1: Join **D** with sl st in upper right corner of afghan, ch 1, 3 sc in corner, work 107 sc evenly spaced across top edge, 3 sc in upper left corner, 127 sc evenly spaced along left side, 3 sc in bottom left corner, 107 sc evenly spaced across bottom edge, 3 sc in bottom right corner, 127 sc evenly spaced across right side; join with sl st in first sc.

Rnd 2: Sl st in next sc (corner), ch 6 (counts as dc, ch 3), dc in same st, * (ch 1, skip next sc, dc in next sc) 53 times, ch 1, skip next sc, (dc, ch 3, dc) in next sc (corner), (ch 1, skip next sc, sc in next sc) 64 times, ch 1, skip next sc *, (dc, ch 3, dc) in next sc (corner); rep from * to * once; join with sl st in third ch of beg ch 6.

Rnd 3: Sl st in ch sp, ch 1, 3 sc in same sp, sc in each dc and each ch-1 sp, and 3 sc in each corner ch-3 sp around; join with sl st in first sc.

Rnd 4: Sl st in next sc (corner), ch 1, sc in same st, ch 1, skip next sc, *[(tr, ch 1) 5 times in next sc, skip next 4 sc, sc in next sc, skip next 4 sc, ch 1] across to next corner, (tr, ch 1) 5 times in next sc, skip next sc **, sc in next sc, ch 1, skip next sc; rep from * twice more; rep from * to ** once more; join with sl st in first sc.

Rnd 5: Ch 7 (counts as one dtr and ch 2), (dtr, ch 2) 3 times in same st, sc in center tr of next 5-tr group, * ch 2, (dtr, ch 2) 4 times in next sc, sc in center tr of next 5-tr group; rep from * around, ending with ch 2; join with sl st in fifth ch of beg ch-7.

Rnd 6: Sl st in ch sp, ch 2, CL2 in first ch-2 sp, (ch 3, CL3 in next ch-2 sp) twice, * ch 4, sc in next sc, ch 4, skip next ch-2 sp, (CL3, ch 3) in each of next 2 ch-2 sps, CL3 in next ch-2 sp; rep from * around, ending with ch 4, sc in next sc, ch 4; join with sl st in top of beg cluster. Fasten off **D**.



RED HEART® "Super Saver®", Art. E300 available in solid color – 7oz (198g), 364yd (333m) or multi or fleck color – 5oz (141g), 244yd (223m) skeins.

ABBREVIATIONS: approx = approximately; beg = begin(ning); **A** = Color A; **B** = Color B; **C** = Color C; **D** = Color D; **E** = Color E; **ch** = chain; **dc** = double crochet; **dec** = decrease(s)(d)(ing); **dtr** = double treble crochet; **hdc** = half double crochet; **inc** = increase(s)(d)(ing); **mm** = millimeters; **rnd(s)** = round(s); **sc** = single crochet; **sl** = slip; **sl st** = slip stitch; **sp(s)** = space(s); **st(s)** = stitch(es); **tr** = treble crochet; **yo** = yarn over hook; **[]** = work directions in brackets the number of times specified; * or ** = repeat whatever follows the * or ** as indicated.